



MONTHLY MEMBERSHIP PROGRESS REPORT

District 2 S4

Results as of: 12/31/2016

GMT: HAL GRIFFIN

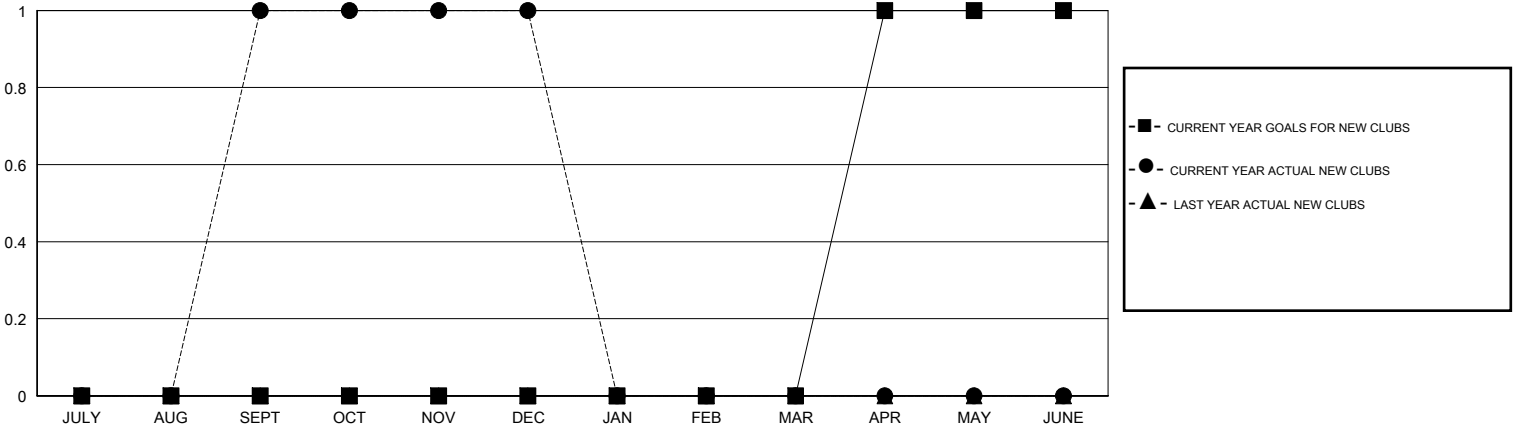
LOCATION TEXAS

GMT CA 1

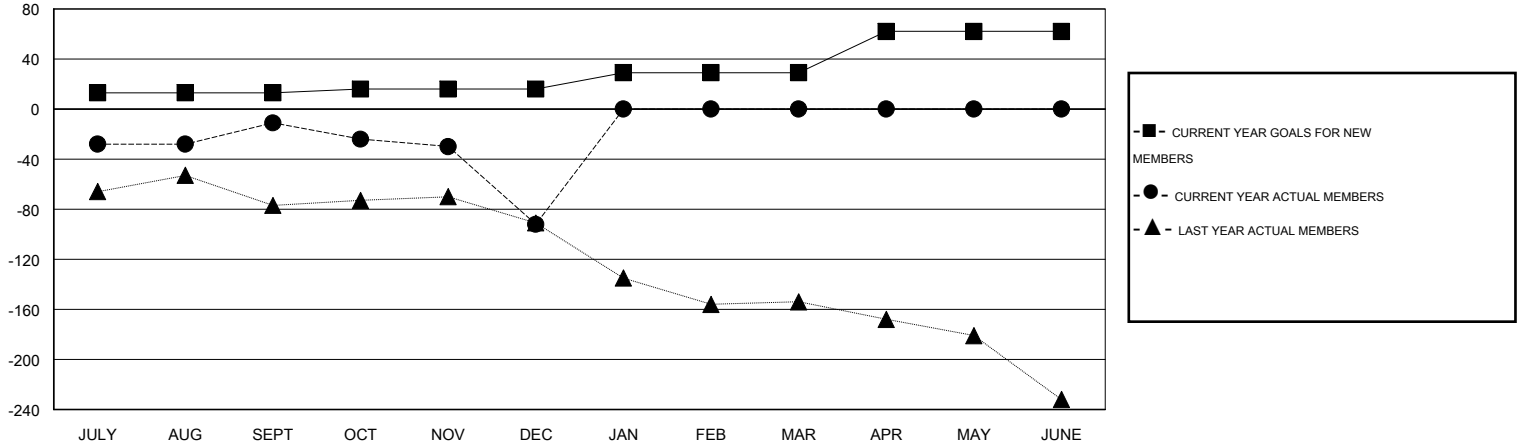
Clubs				
RESULTS FOR 2016-2017				
QUARTER	NEW CLUB GOAL	NEW CLUBS	DROPPED CLUBS	NET GAIN/LOSS
JULY/AUG/SEPT	0	1	1	0
OCT/NOV/DEC	0	0	2	-2
JAN/FEB/MAR	0	0	0	0
APR/MAY/JUNE	1	0	0	0

Members				
RESULTS FOR 2016-2017				
QUARTER	NEW MEMBER GOAL	CHARTER AND NEW MEMBERS ADDED	DROPPED MEMBERS	NET GAIN/LOSS
JULY/AUG/SEPT	13	107	118	-11
OCT/NOV/DEC	3	55	136	-81
JAN/FEB/MAR	13	0	0	0
APR/MAY/JUNE	33	0	0	0

GOALS AND ACTUAL NEW CLUBS CUMULATIVE



GOALS AND ACTUAL MEMBERS CUMULATIVE



DROPPED CLUBS: 3

50 CLUBS OF 84 ADDED 1 OR MORE NEW MEMBERS

GENDER DISTRIBUTION	
MALE	1,398 (61.05%)
FEMALE	892 (38.95%)

DROPPED MEMBERS	
DECEASED	10
CLUB CANCELLED	27
OTHER	217
TOTAL	254

[CLICK HERE FOR HEALTH ASSESSMENT DATA](#)

FAMILY UNIT MEMBERS	371
HEAD OF HOUSEHOLD	182
NON-HEAD OF HOUSEHOLD	189